

3970 JOHNS CREEK COURT

SUWANEE, GEORGIA 30024



- High quality, single story office building
- Convenient access to Peachtree Parkway (GA 141)
- Favorable Forsyth County taxes
- Property totaling 130,783 SF
- Suites available - 16,984 SF
- Located in prestigious Johns Creek
- Parking ratio offered at 4.5:1000 SF
- 100% office build-out with dock high doors available in rear
- Close proximity to area amenities including a variety of restaurants, banks and hotels



For more information contact:

Skip Hiatt

or

Ron Levin

770.458.2870

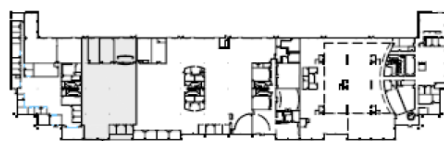
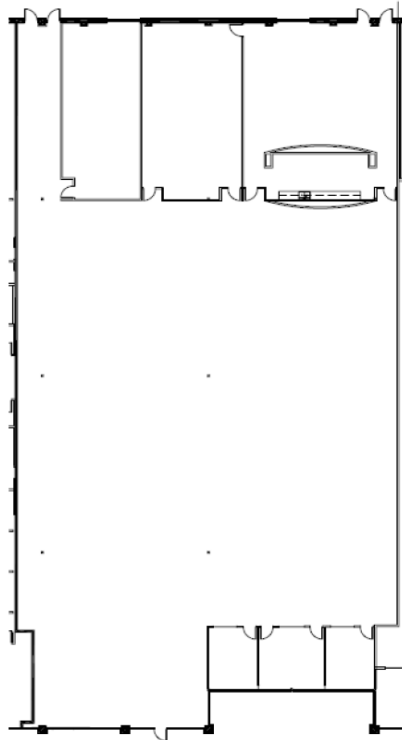
www.altaproperties.com



3970 JOHNS CREEK COURT

SUWANEE, GEORGIA
30024

3970 Johns Creek Court • Suite 200 • 16,984 RSF



Key Plan

For more information contact:

Skip Hiett

or

Ron Levin

678.222.3342

www.altaproperties.com



Information contained herein has been provided to broker by owner or from other sources. We have no reason to doubt its accuracy, but we do not guarantee it. Broker disclaims all expressed or implied responsibilities for omissions, errors, environmental conditions of soil/structure, operating systems, the roof, price and compliance with applicable laws. Suitability for intended use or any other matter is the responsibility of purchaser or tenant. Prospective purchasers or tenants agree to independently obtain and analyze all material information.