

112 & 114 TOWNPARK DRIVE

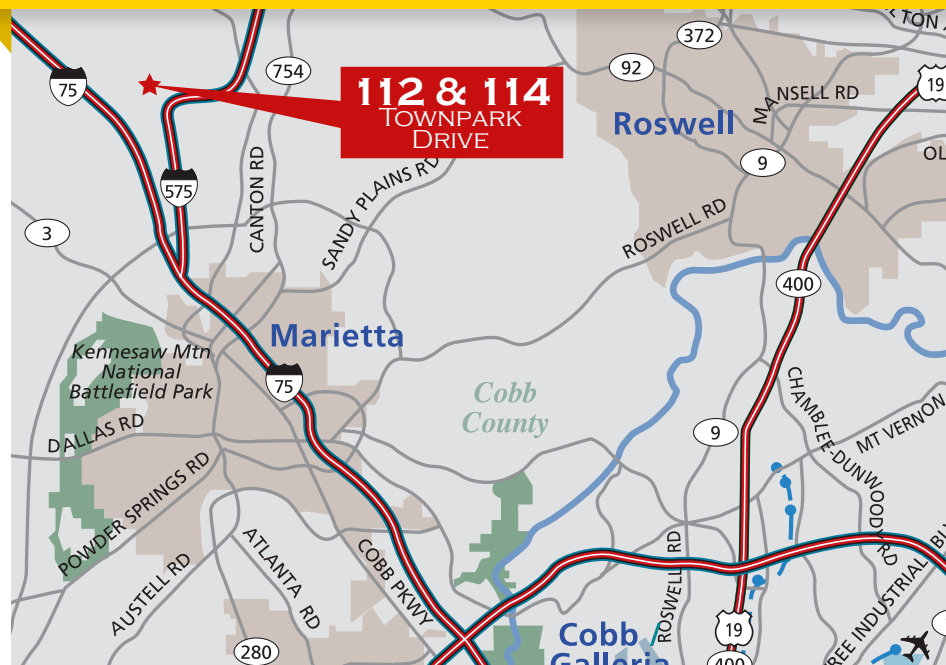
KENNESAW, GEORGIA 30144



112 & 114 TOWNPARK DRIVE

Property Highlights

- Suites available from 857 RSF
- High-Quality, Four and Five-story Office Buildings totaling 147,000 Sq. Ft.
- Ample surface parking of 3.7 spaces per 1,000 RSF with additional parking available
- Renovated common areas, state of the art training room
- Located at the Chastain Road Interchange of I-575, TownPark provides unparalleled access to I-575 and I-75
- Close proximity to area amenities including Town Center Mall, a variety of restaurants, banks and hotels, as well as quality housing in varying price ranges



Ron Levin
678.222.1010
rlevin@altaproperties.com

Amir Levin
678.222.3344
alevin@altaproperties.com

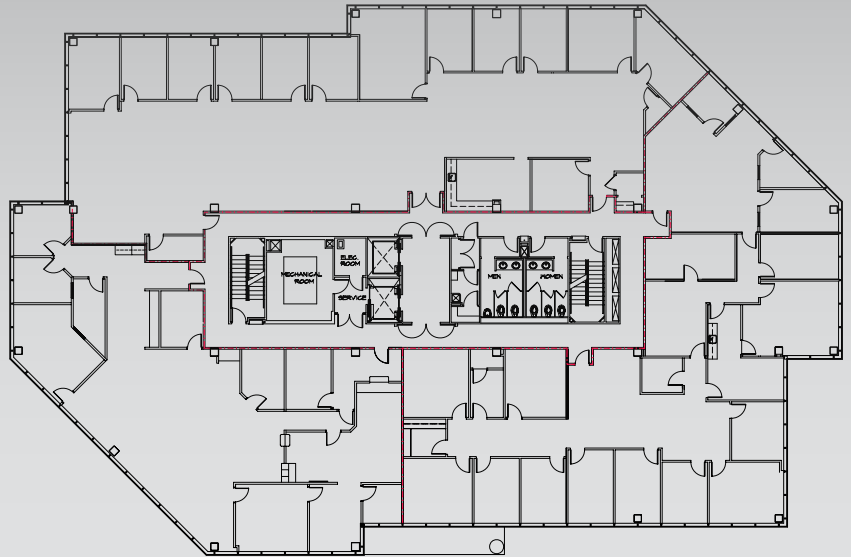
Main
770.458.2870
altaproperties.com





112 & 114 TOWNPARK DRIVE

KENNESAW, GEORGIA 30144



112 & 114 Townpark Drive
Typical Floor Plan



112 & 114 TOWNPARK DRIVE



Ron Levin
678.222.1010
rlevin@altaproperties.com

Amir Levin
678.222.3344
alevin@altaproperties.com

Main
770.458.2870
altaproperties.com

Information contained herein has been provided to broker by owner or from other sources. We have no reason to doubt its accuracy, but we do not guarantee it. Broker disclaims all expressed or implied responsibilities for omissions, errors, environmental conditions of soil/structure, operating systems, the roof, price and compliance with applicable laws. Suitability for intended use or any other matter is the responsibility of purchaser or tenant. Prospective purchasers or tenants agree to independently obtain and analyze all material information.